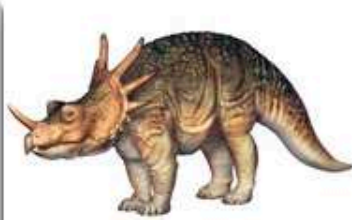


ALLOSAURE



STYRACOSAURE



PTEROSAURE



TYRANOSAURE



VELOCIRAPTOR



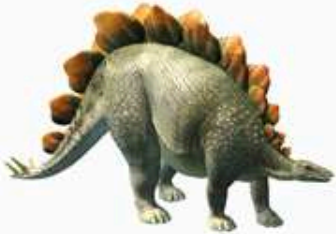
PARASAUROLOPHUS



KENTROSAURE



OVIRAPTOR



STEGOSAURE



IGUANODON



ANKYLOSAURE



GALLIMIMUS



DIPLODOCUS



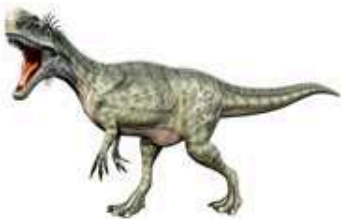
BRACHIOSAURE



TRICERATOPS



PLATEOSAURE



MONOLOPHOSAURE



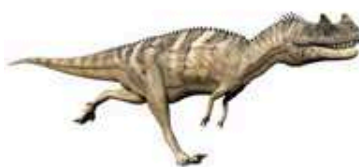
TITANOSAURE



BRONTOSAURE



ELASMOSAURE



CERATOSAURE



TALARURUS



SPINOSAURE



PTEROSAURE